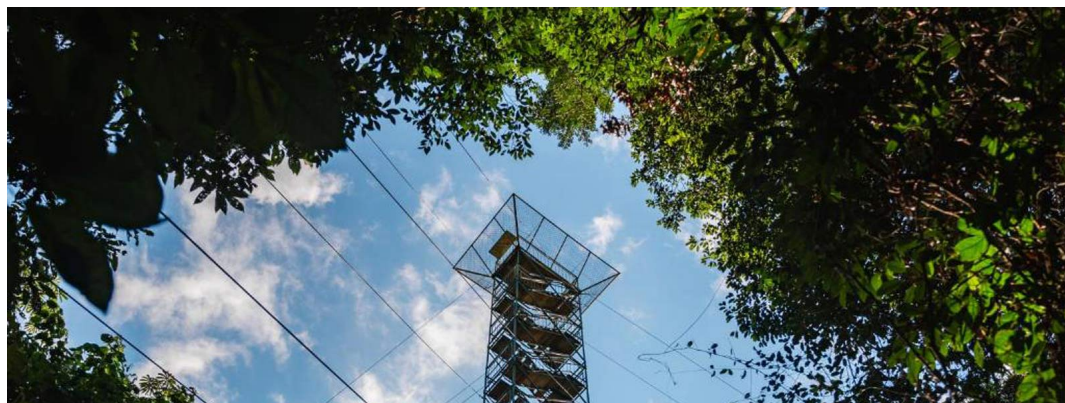


## PERU - PERU AMAZON EXTENSION | REFUGIO AMAZONAS



### INTRODUCTION

**This one-of-a-kind itinerary allows you to experience the best of the Amazon in style while minimizing your ecological footprint.**

Lying deep within the Peruvian rainforest, Refugio Amazonas is a pocket of luxury in this vast wilderness. Nature-lovers are invited to step into a world of jungle activities and get involved in the Citizen Science program, Wired Amazon. Secluded, intimate and luxurious, Refugio Amazonas is a 32-bedroom jungle lodge set within a 200-hectare private reserve within the buffer zone of the Tambopata National Reserve. Approximately two hours from Puerto Maldonado airport in the southeast of Peru, the lodge offers a huge variety of child-friendly adventures (a family program is available) with a focus on conservation and science so is the perfect retreat for travellers of all ages.

#### Highlights include:

**Clay licks** - Take a boat trip to the Chuncho Clay Lick inside the Tambopata National Reserve to see macaws descend to the clay lick on clear mornings.

**Canopy tower** - A 30-metre scaffolding canopy tower gives you spectacular views of the vast expanses of standing forest with a good chance of spotting toucans, parrots, macaws or mixed species canopy flocks.

**Life in the rainforest** - Visit a working jungle farm and a real Brazil nut concession to learn about the way of life in the rainforest. You will taste exotic tropical fruits and discover medicinal plants from the neighbouring local families that we are helping integrate into the ecotourism industry.

**On this all-encompassing personalised itinerary, Chimu will provide travel logistics for your travel party for the duration of your journey, plus expert guides for all the major sightseeing as per itinerary. Each night you will stay in superior accommodation, handpicked by our experienced team for their creature comforts, convenient locations, and impeccable service.**

#### TRIP CODE

PETSRO4

#### DEPARTURE

Daily

#### DURATION

4 Days

#### LOCATIONS

Peru, Amazon



## PERU - PERU AMAZON EXTENSION | REFUGIO AMAZONAS

For another exceptional Amazon experience check out the [Inkaterra Reserva Amazonica Extension](#) or [Tambopata Research Centre Extension](#).

### GREEN POINTS!

1. In partnership with the locals 75% of the profits from this amazing lodge goes directly to the local community.
2. Citizen Science projects offer travellers the opportunity to help the Refugio identify and protect new species.
3. Refugio Amazonas runs one of the most important scientific projects to save the Macaw population; a study that is hoped to assist populations all over Latin America.

## ITINERARY

### DAY 1: Arrival to Refugio Amazonas

To begin your rainforest adventure, you will take a quick flight from Lima or Cuzco to the Amazonian city of Puerto Maldonado, in Southeastern Peru. Upon arrival at Puerto Maldonado Airport, a Refugio Amazonas representative will greet you and accompany you on the journey to the lodge. You will be taken on a one-hour road trip, followed by a tranquil 1-hour boat trip on the Tambopata River, to arrive at Refugio Amazonas. During the trip, there will be a stop at the local office where you can repack your luggage, bringing only necessary items for the next four days. \*Guests are allowed to bring only one carry-on of a maximum of 15kg per person; all other luggage must be left in storage at the office. Upon reaching the lodge, you will be warmly welcomed and given a brief orientation. After dinner, you have the option to participate in a night walk, where you can observe the animals that are active during the evening, but often difficult to spot. The nocturnal frogs, with their captivating shapes and colors, as well as interesting sounds, can be seen more easily. Please note: The Peruvian Amazon is a very remote region. Cruise and lodge operators design transfer schedules to align with specific incoming and departing flights to maximise their operations. Frequent flight schedule changes can also complicate matters. We strongly advise consulting with your booking agent prior to confirming your flights to avoid any potential long delays and/or missed connections. \*Refugio Amazonas offers a variety of on-site activities and excursions that can be customized. The itinerary presented below is provided as an example and may be subject to changes depending on weather, availability, or your personal preferences.



### TRIP CODE

PETSR04

### DEPARTURE

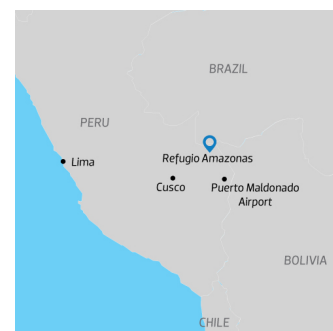
Daily

### DURATION

4 Days

### LOCATIONS

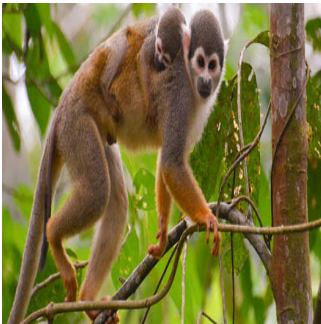
Peru, Amazon



# PERU - PERU AMAZON EXTENSION | REFUGIO AMAZONAS

## DAY 2: Amazon Exploration

After breakfast, you'll have the opportunity to explore the Condénado lake's wildlife from a canoe or catamaran, where you can spot exotic creatures like hoatzin, caiman, horned screamers, macaws, and rare otters. Later, you'll embark on a thirty-minute walk from the lodge to a 25-meter canopy tower with a staircase, offering stunning views of toucans, macaws, and raptors from the treetops. After lunch, you'll visit a local farm to learn about Amazonian crops and local agriculture. An ethnobotanical tour will follow, where you'll gain insights into the medicinal practices of the region. In the evening, Refugio staff will offer engaging lectures that cover conservation challenges, opportunities, and projects in the Tambopata National Reserve.



## DAY 3: Amazon Exploration

Experience the magnificent spectacle of a clay lick, where you'll witness vibrant-colored macaws, parrots, and parakeets feast on clay. Species such as dusky-headed and cobalt-winged parakeets are frequently seen, and with some luck, you may also spot blue-headed pionus, various species of macaws and parrots. After lunch, you'll embark on a brief hike from the lodge to a stunning Brazil nut forest, which has been sustainably harvested for decades. Here, you'll learn about the entire process of collecting, transporting, and drying one of the rainforest's only sustainable product. In the afternoon, the medicinal plants' trail will take you on a journey to explore the vast array of plants and trees that the local population has used for centuries to heal their bodies and minds. You may recognize some of the names, such as Sacha-Ajos, Uña De Gato, Sacha-Charcot, Para-Para, Ayahuasca, among others.



### TRIP CODE

PETSRO4

### DEPARTURE

Daily

### DURATION

4 Days

### LOCATIONS

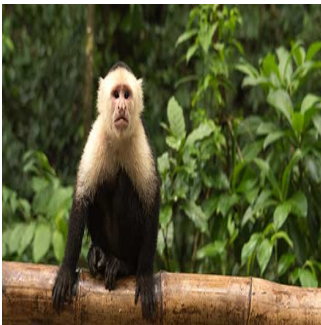
Peru, Amazon



PERU - PERU AMAZON EXTENSION | REFUGIO AMAZONAS

DAY 4: Depart Refugio Amazonas

After breakfast, you will embark on a two-hour journey back to Puerto Maldonado for your departure flight. The trip includes a 1-hour boat ride followed by a 1-hour road transfer to Puerto Maldonado. This provides a final opportunity to immerse yourself in the breathtaking natural scenery of the Tambopata National Reserve, offering a chance to spot a variety of wildlife along the way. Please note: The Peruvian Amazon is a very remote region. Cruise and lodge operators design transfer schedules to align with specific incoming and departing flights to maximise their operations. Frequent flight schedule changes can also complicate matters. We strongly advise consulting with your booking agent prior to confirming your flights to avoid any potential long delays and/or missed connections.



TRIP CODE

PETSRO4

DEPARTURE

Daily

DURATION

4 Days

LOCATIONS

Peru, Amazon



INCLUSIONS & DETAILS

Accommodation	Jungle Lodge
Inclusions	<div>INCLUSIONS</div> <div>Accommodation with meals All tours, activity services and guides Group return transfers from Puerto Maldonado airport All river transportation Entrance fee</div> <div>EXCLUSIONS</div> <div>Spa treatments Optional activities International &amp; internal flights not indicated Visa and reciprocity fees (if applicable) Airport tax (if applicable) Travel insurance Beverages Personal expenses Gratuities for tour guides/drivers/lodge staff Any items not mentioned as included</div>
Difficulty Rating	2 (Light Adventure - Average Fitness Required)
Single Surcharge	A single supplement surcharge applies and is subject to availability. Please <a href="#">contact us</a> for more information.

PERU - PERU AMAZON EXTENSION | REFUGIO AMAZONAS

Notes	<p>Prices are based on per person, twin share.  Prices are correct at time of publishing but are subject to change at any time.  All entrance fees are subject to change without prior notice.  <b>PLEASE NOTE:</b> Guests are allowed to bring only one carry-on of a maximum of 15kg per person; All other luggage must be left in storage at the office.</p>
Price Dependent upon	<p>Currency fluctuation, seasonality, and availability at time of booking.</p>

SUSTAINABILITY

TRIP CODE
PETSRO4
DEPARTURE
Daily
DURATION
4 Days
LOCATIONS
Peru, Amazon
