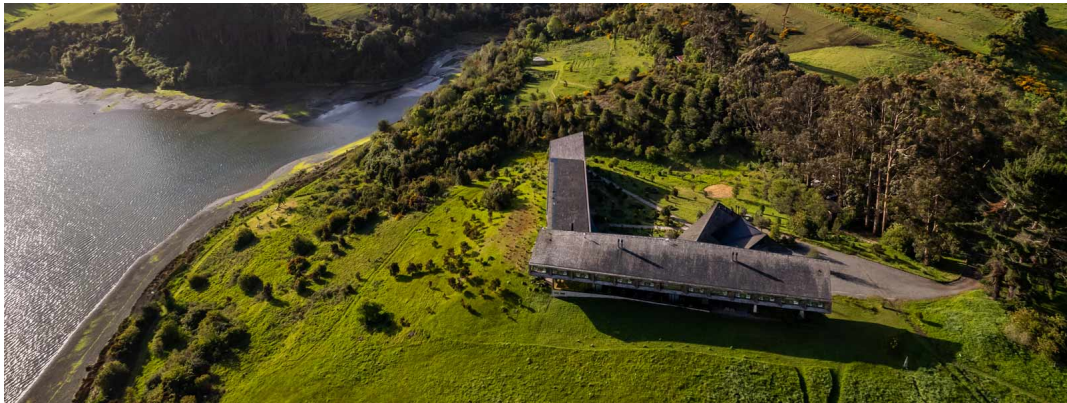


# CHILE - REFUGIA CHILOE EXTENSION



## INTRODUCTION

Refugia Chiloe (previously Tierra Chiloe) is a luxury hotel and spa nestled on Chile's Chiloé Island, offering panoramic views of Pullao Bay and the surrounding archipelago. Blending contemporary architecture with local craftsmanship, the lodge provides guests with immersive cultural experiences, guided excursions, and wellness activities that delve into the island's rich traditions and natural beauty.


### Highlights Include:

- Hiking & Walking** - Explore the verdant terrains of Chiloé through guided hikes and nature walks.
- Boat Excursions** - Embark on journeys aboard the Williche, Refugia's private vessel, to explore the archipelago's islands and marine ecosystems.
- Local Community Visits** - Engage with island communities to gain insights into Chiloé's traditions, crafts, and daily life.

### GREEN POINTS!

Refugia Chiloe is deeply committed to environmental and cultural stewardship on Chiloé Island. The hotel minimizes its ecological footprint by avoiding single-use plastics, using energy-efficient systems, employing local staff, and incorporating sustainable architecture. It also supports community initiatives, from conserving wetlands and restoring wooden churches to aiding local artisans. Starting October 2025, guests can contribute to these efforts, including donating musical instruments for schoolchildren as part of Refugia's broader support of arts and education in Chile.

On this all-encompassing personalised itinerary, Chimu Adventures will provide travel logistics for your travel party for the duration of your journey, plus expert guides for all the major sightseeing as per itinerary. Each night you will stay in deluxe accommodation, handpicked by our experienced team for their creature comforts, convenient locations, and impeccable service.

TRIP CODE
CHFTTCA
DEPARTURE
Daily From October To April (During The Patagonia Season)
DURATION
4 Days
LOCATIONS
Chile, Patagonia


## CHILE - REFUGIA CHILOE EXTENSION

**PLEASE NOTE: Pricing is subject to change and availability at the time of booking. [Contact us](#) for more information.**

### ITINERARY

#### DAY 1: Arrival in Chiloe Island

On arrival at Castro Airport on Chiloe Island, you will be met and transferred to Refugia Chiloe. Refugia provides shared transfers to comfortably accommodate guests travel arrangements. The transfer from Puerto Montt Airport which is approximately 3 hours by road travels along a very scenic route that includes a ferry boat ride that lasts around 45 minutes, during which you can get out and watch the islands passing by. After settling into your room you will be briefed about the excursions available to you for your stay. Refugia Chiloe is located on the largely unexplored island of Chiloe and has a rich and timeless culture. The sustainable 24-room lodge offers all-inclusive programs so you can just relax and discover Chiloe and its surroundings with the daily excursions, great meals and comfortable hotel facilities. Only a short ferry ride from the mainland, yet seemingly a world away, this archipelago sits at the southern end of the Lake District, south of Puerto Montt. Where you can explore its verdant green hills, pristine national parks, small towns with craft markets and UNESCO world heritage churches. Chiloe is great for trekking, horse-riding, bike rides and kayaking amongst other activities. Please Note: Refugia Chiloe does include most activities but they may have a limited number of "extra cost" activities, which will be at your own expense and paid locally. The sequence of the excursion as well as the logistics and/or duration might change depending on weather conditions.



#### TRIP CODE

CHFTTCA

#### DEPARTURE

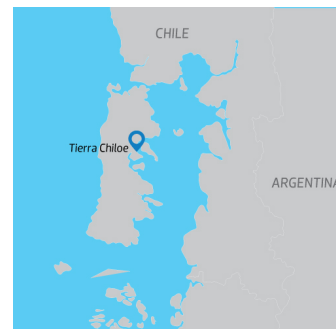
Daily From October To April  
(During The Patagonia Season)

#### DURATION

4 Days

#### LOCATIONS

Chile, Patagonia



#### DAY 2: Activities in Chiloe Island

Today you may choose from a variety of Half and Full Day excursions. You will discover the magic, culture and nature of the archipelago through a different angle every day. Choose between cultural trips, boat excursions, horseback riding, biking, trekking and nature observations and visit the unique sites of the region just the way you like it. There are different difficulty levels available to suit every guest.



# CHILE - REFUGIA CHILOE EXTENSION

## DAY 3: Activities in Chiloe Island

Again you may choose from a variety of Half and Full Day excursions. The Isla Grande de Chiloé is located 1.186 kilometres south of Santiago and 90 kilometres southwest of Puerto Montt. Amongst its many attractions are its wooden architectonic constructions, its houses on stilts and its many churches, most of them declared as World Heritage Sites. The local culture includes a spiritual mix of mythology and Catholicism.



## DAY 4: Tierra Chiloe Departure

You will depart from Refugio Chiloe and transfer to your onwards destination. Refugia provides shared airport transfers to comfortably accommodate guests travel arrangements.



### TRIP CODE

CHFTTCA

### DEPARTURE

Daily From October To April  
(During The Patagonia Season)

### DURATION

4 Days

### LOCATIONS

Chile, Patagonia



## INCLUSIONS & DETAILS

<b>Accommodation</b>	All Inclusive Luxury Lodge
----------------------	----------------------------

## CHILE - REFUGIA CHILOE EXTENSION

### INCLUSIONS

Shared transfers to/from Castro Airport or Puerto Montt Airport  
Lodging at Refugia Chiloe  
All meals and open bar (premium wines and vintage liquors excluded) while at the lodge  
Sightseeing (2HD or 1FD per day) with local English-speaking guide on a small group basis from the lodge (selected activities may have an additional cost)  
Use of pool, sauna and jacuzzi

#### Inclusions

### EXCLUSIONS

Spa treatments  
International & internal flights  
Specially arranged excursions and transfers (transfers to/from Puerto Varas Airport are available for an additional cost)  
Visa and reciprocity fees (if applicable)  
Travel insurance  
Beverages other than specified  
Personal expenses  
Gratuities for tour guides/drivers/lodge staff  
Any items not mentioned as included (including but not limited to telephone, laundry, store expenses)

#### Difficulty Rating

2 (Light Adventure)

#### Single Surcharge

A single supplement surcharge applies and is subject to availability. Please [contact us](#) for more information.

#### Notes

Prices are based on per person, twin share.  
Prices are correct at time of publishing but are subject to change at any time.  
All entrance fees are subject to change without prior notice.

#### Price Dependent upon

Currency fluctuation, seasonality, and availability at time of booking.

#### TRIP CODE

CHFTTCA

#### DEPARTURE

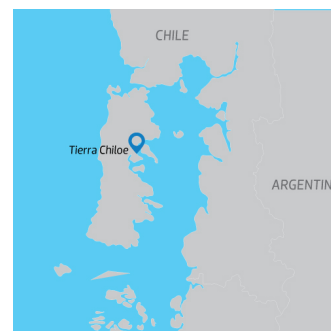
Daily From October To April  
(During The Patagonia Season)

#### DURATION

4 Days

#### LOCATIONS

Chile, Patagonia



## SUSTAINABILITY